



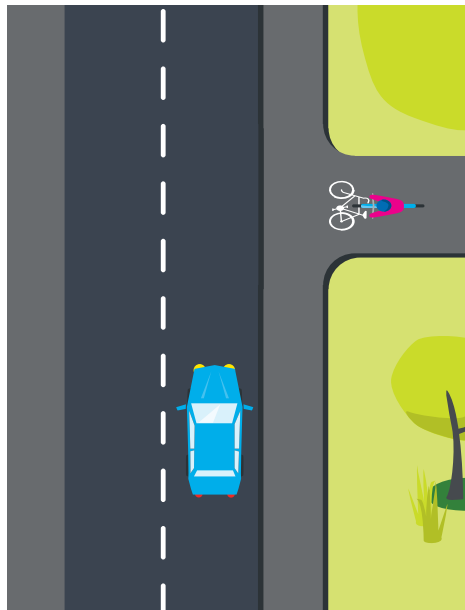
SWEDISH
TRANSPORT
AGENCY



Bicycle passages and bicycle crossings

This applies where cyclists cross a road and where there is no bicycle passage or bicycle crossing

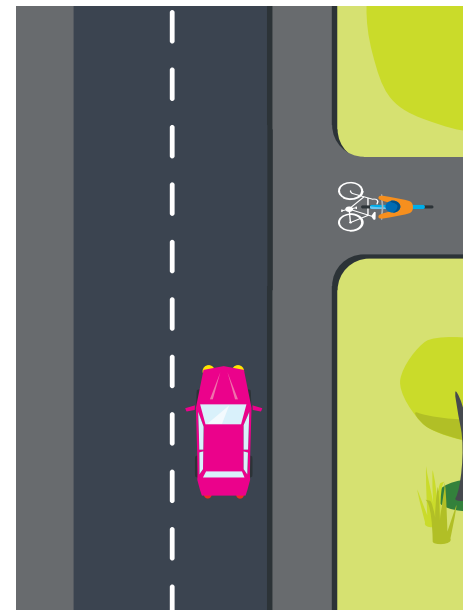
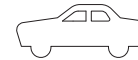
A vehicle's speed must be adapted to ensure road safety. Consideration must be given to, amongst other things, road, weather and visibility and other traffic conditions. The speed must never be higher than the driver can maintain control of the vehicle and can stop within that section of road that is visible and before any obstacle that can be predicted.



- When you are entering a road from a cycle path, you must give way.

! Giving way means that you:

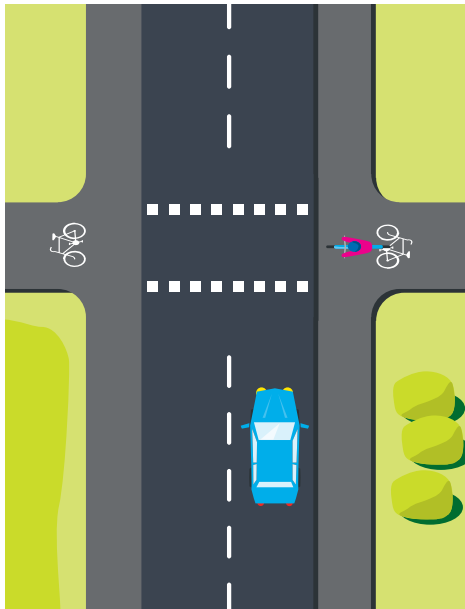
- should slow down in good time or stop if necessary
- may proceed only if this does not entail danger or hindrance for other road users.



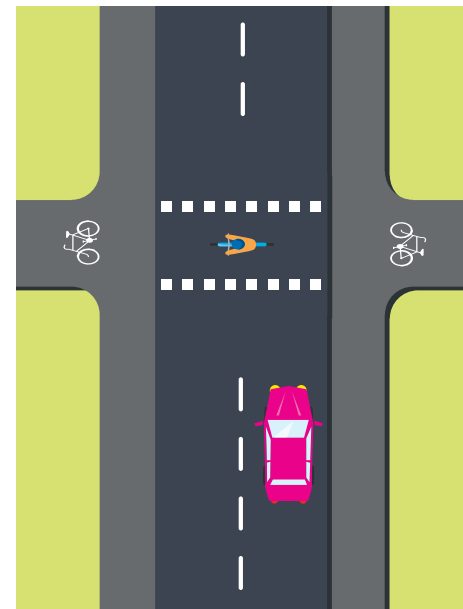
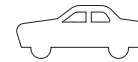
- There are no special regulations for this situation.

This applies at an unsupervised bicycle passage

A bicycle passage is a part of the road that is intended for use by cyclists or class II moped riders to cross a road or a cycle path and is designated with road markings. Sometimes bicycle passages are raised as a measure to slow down traffic. A bicycle passage is unsupervised if traffic is not controlled by traffic signals or by a police officer.



- When you are about to cross a road on a bicycle passage, you must give way.

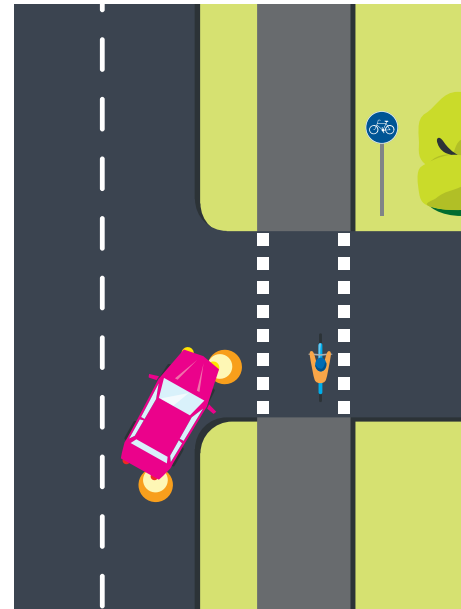
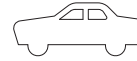
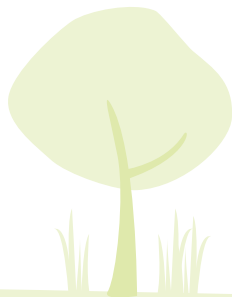


- When you are approaching an unsupervised bicycle passage then you must adjust your speed so as not to endanger cyclists or class II moped riders who are using the passage.

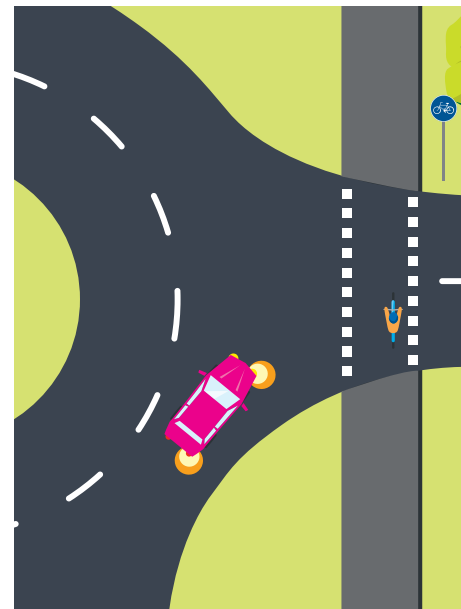
...continued **unsupervised** bicycle passage



- It may seem contradictory that you must give way when you are about to enter a road from a cycle path whilst the vehicle driver also has obligations towards you as a cyclist. Through equal obligations you and the driver must pay attention to each other. This way the safety increases.

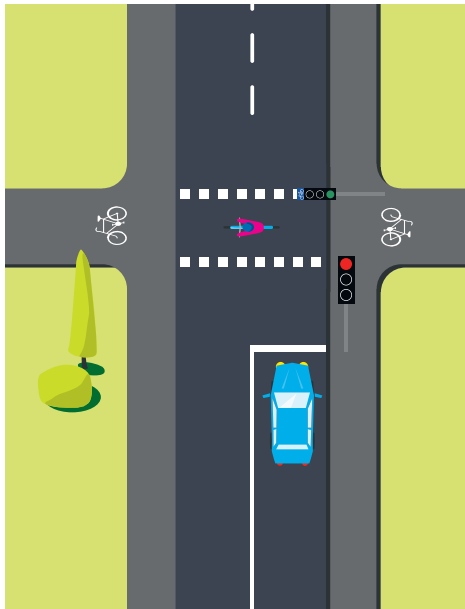


- When you have turned off at a crossroad and are about to pass an unsupervised bicycle passage, you must drive at a low speed and give cyclists and class II moped riders, who are on or about to enter the bicycle passage, an opportunity to cross.



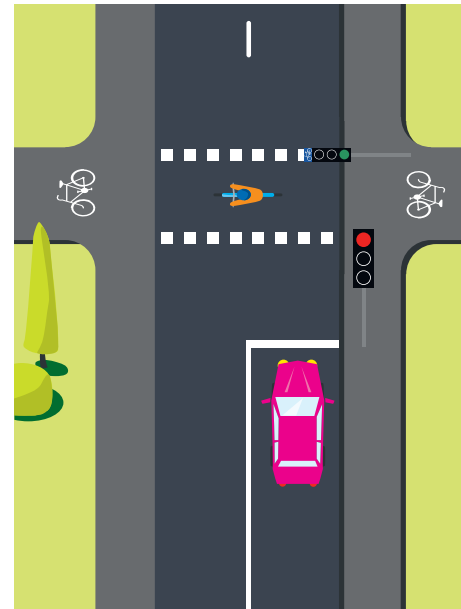
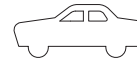
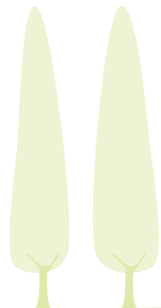
- When you are exiting from a roundabout and are about to pass an unsupervised bicycle passage, you must drive at a low speed and give cyclists and class II moped riders, who are on or about to enter the bicycle passage, an opportunity to cross.

This applies at a supervised bicycle passage

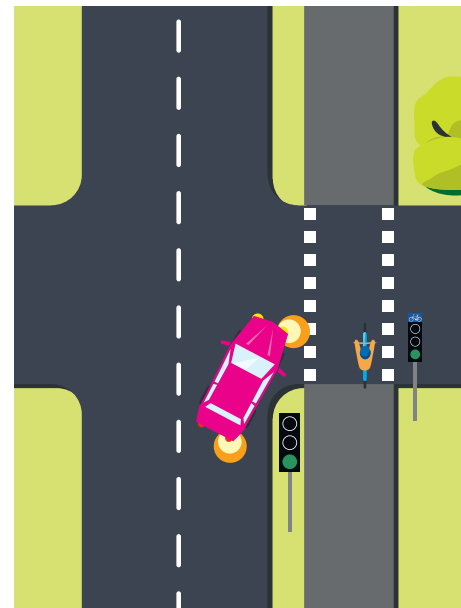


- You must obey the traffic signals.
- You should pay due regard to vehicles approaching the passage and may only cross the road if this can be done safely.

A bicycle passage is supervised if traffic is controlled by traffic signals or by a police officer.



- You must obey the traffic signals.
- At a supervised bicycle passage you must give cyclists and moped riders an opportunity to cross if they have correctly entered the bicycle passage. This applies even if the traffic signal shows green.

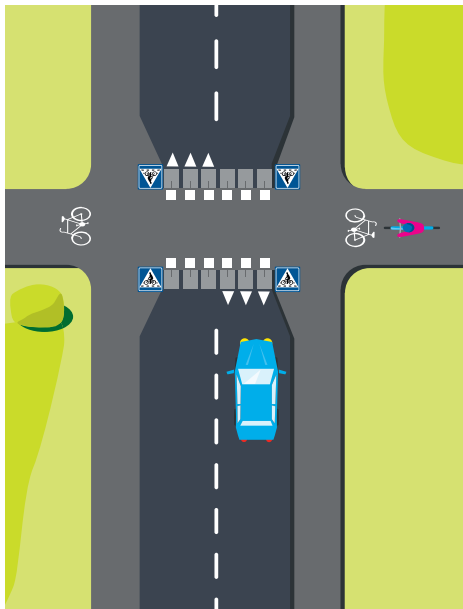


- When you have turned off at a crossroad and are about to pass a supervised bicycle passage, you must drive at a low speed and give way to cyclists and class II moped riders who have correctly entered or are about to enter the bicycle passage.

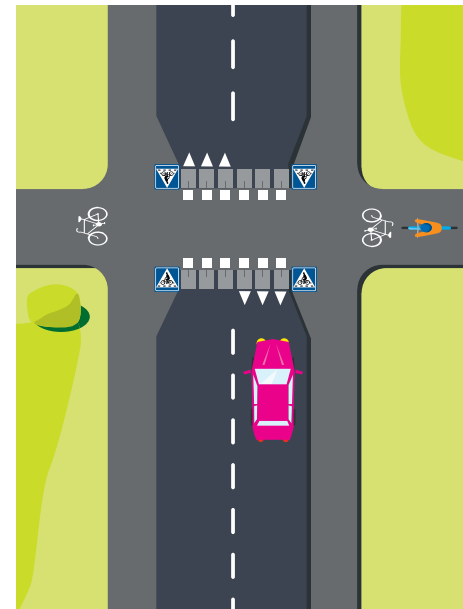
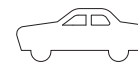


This applies at a bicycle crossing

A bicycle crossing is a part of the road that is intended for use by cyclists or class II moped riders to cross a road or a cycle path and is designated with road markings and road signs. A bicycle crossing shall be designed to ensure that the speed of the vehicles does not exceed 30 km per hour.



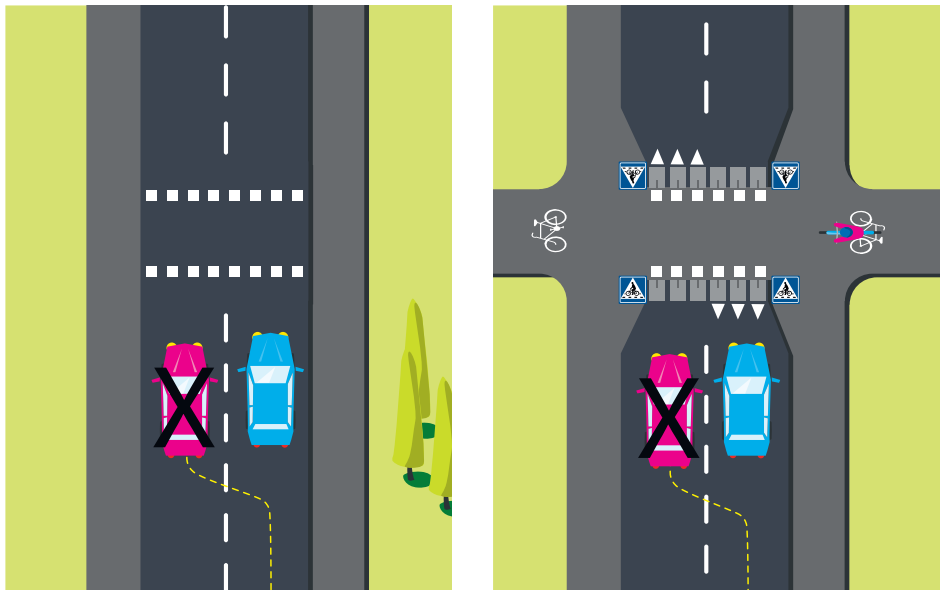
- When you are about to cross a road on a bicycle crossing, you should pay due regard to the proximity and speed of vehicles approaching.



- You must give way to cyclists and class II moped riders who have entered or are about to enter the bicycle crossing.

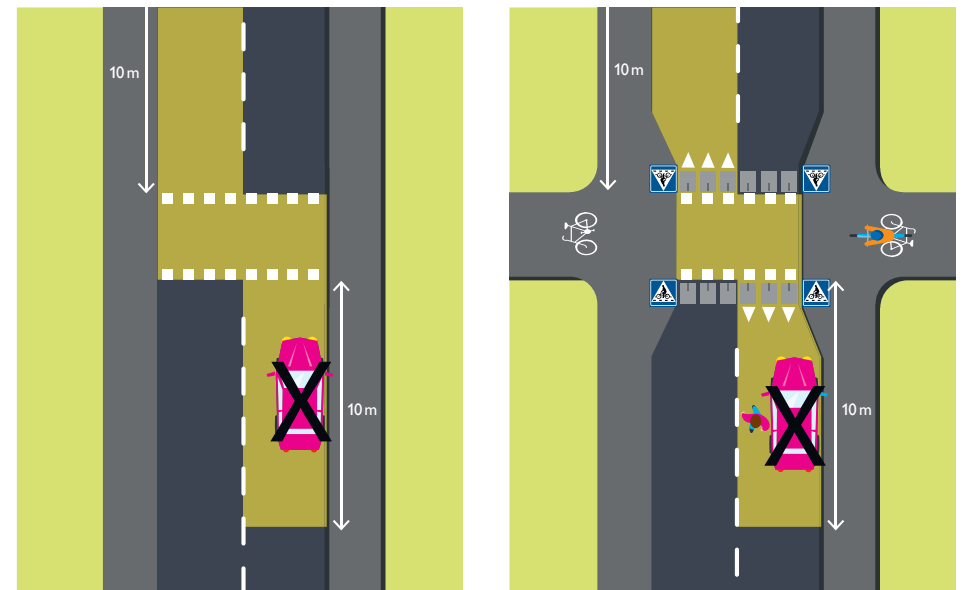
Overtaking at an unsupervised bicycle passage or a bicycle crossing

- You may not overtake on or immediately prior to an unsupervised bicycle passage or a bicycle crossing.



Parking at a bicycle passage or a bicycle crossing

- You may not stop or park on a bicycle passage or a bicycle crossing or closer than 10 metres prior to a bicycle passage or a bicycle crossing. This applies to both supervised and unsupervised bicycle passages and bicycle crossings.



This brochure is a part of a series providing information about some of the road traffic regulations in Sweden.

Included in the series are

- Driving in a roundabout
- Stopping and parking
- Pedestrian crossings
- Choosing the right vehicle lighting
- Bicycle passages and bicycle crossings

You'll find more information on our website,
www.transportstyrelsen.se.



www.transportstyrelsen.se
telephone +46 (0)771 503 503